

BMFL™ FollowSpot LT



BMFL FollowSpot LT – A compact, affordable, and powerful stage light for the larger arena.

Further adding to the ground breaking RoboSpot system, the LT is designed for the larger venue that requires a longer, tighter beam and greater output power. The LT is the same as the standard BMFL FollowSpot, which is substantially more powerful than other products of similar power. The proprietary optical system provides a zoom range from 2° to 8° and an output exceeding 5 metres.

Like the standard BMFL FollowSpot, the LT can be controlled manually, stand-alone follow spot using the Robe and LightMaster-Rear control kits. Similarly, the LT can be controlled remotely using the Robe RoboSpot MDC remote follow system, which is pre-wired for the Digital Camera.

Packed with all the features you would expect from a high-end product, including, imperceptible colour mixing filters, 6000K native colour temperature, CRI > 90, 2700K & CTB 9000K, fixed & variable frost filters, and a fast iris.



able solution

*in, the FollowSpot
:r throw distance,
ie size and weight
ally smaller than
d design provides
7 455.000 lux at*

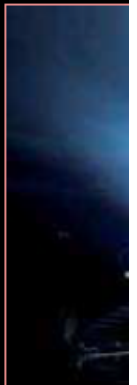
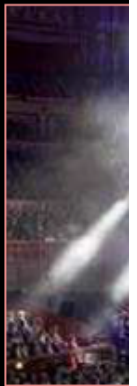
*e operated as a
LightMaster-Side
can be operated
'spot system and*

*in a BMFL series
7, fixed colour
12, Variable CTO
ers, focus, zoom*



Technical Specification

- Light source type: Compact short-arc metal halide lamp
- Base: PGJX28
- Approved model: OSRAM Lok-it! HTI 1700/PS
- Lifetimes: 750 hours @ 1700 W / 1500 W / Quiet mode
- CRI: 92+
- Colour temperature: 6.000K
- Robe's proprietary optical design
- High - efficiency zoom optical system, ratio 4:1
- Zoom range: 3,5° - 8° optical; 2° - 8° optical + iris
- Output lens diameter: 180 mm
- Dichroic glass reflector for maximising the light efficiency
- High efficient component optics
- Fixture total lumen output:
34.600 lm @ 1700 W
32.180 lm @ 1500 W
28.370 lm @ 1200 Quiet mode
- Light output: 455.000 lx @ 5 m
- Variable CTO: 2.700 - 6.000 K
- Colour Wheel 1: 6 fixed dichroic colours: deep red, deep blue, orange, green, magenta, congo blue + white
- Colour Wheel 2: 6 replaceable „SLOT&LOCK“ dichroic colours: pink, lavender, laser green, 9000 K CTB, minus half and minus green + white
- Iris: Motorized, stepless, pulse effects up to 3 Hz
- Frost: Variable Light, Medium plus replaceable Heavy (two another frosts included)
- Motorized zoom and focus
- Shutter: Separate dual blade system, variable strobe effect up to 10 Hz, full black out
- Dimmer: Optimized dual blade system for exceptional smooth dimming
- Setting & Addressing: ROBE Navigation System 2 (RNS2)
- Display: QVGA Robe touch screen with battery backup, gravitation sensor for auto screen positioning, operation memory service log with RTC, stand-alone operation with 3 editable programs (each up to 100 steps), built-in analyser for easy fault finding
- Protocols: USITT DMX-512, RDM, ArtNet, MA Net, MA Net2, sACN
- Web server
- Wireless CRMX™ technology from Lumen Radio: On request
- DMX Protocol modes: 2
- Control channels: 32, 26
- Pan movement: 540°
- Tilt movement: 270°
- EMS™: Electronic Motion Stabilizer system for Pan & Tilt reducing beam deviation caused by truss movement or vibration (Patent pending)
- Automatic Pan/Tilt position correction
- Power supply: Electronic auto-ranging
- Input voltage range: 200-240 V, 50/60 Hz
- Power consumption: 2000 W at 230 V / 50 Hz
- Power In connector: Neutrik powerCON
- DMX and RDM data in/out: Locking 3-pin & 5-pin XLR
- Ethernet port in: RJ45
- Weight: 35 kg (77.2 lbs)
- Rigging
Mounting positions: 0°, 32°, 90°
Universal operating position
Mounting points: 5 pairs of 1/4-turn locking points
2x Omega adaptors with 1/4-turn quick locks
Safety cable attachment point
Pan and Tilt transport locks
- Accessories:
Lamp Osram Lok-it HTI 1700/PS, BMFL Handles - 2 pcs in box, BMFL Side Handle, RoboSpot Camera, Doughty Trigger Clamp, Safety wire 50 kg, Single Top Loader Case, Dual Top Loader Case
- Legal: BMFL™ FollowSpot LT is a Trademark of Robe lighting s. r. o. BMFL™ FollowSpot LT is patented by Robe lighting s. r. o. and is protected by one or more pending or issued patents.



™ FollowSpot LT

